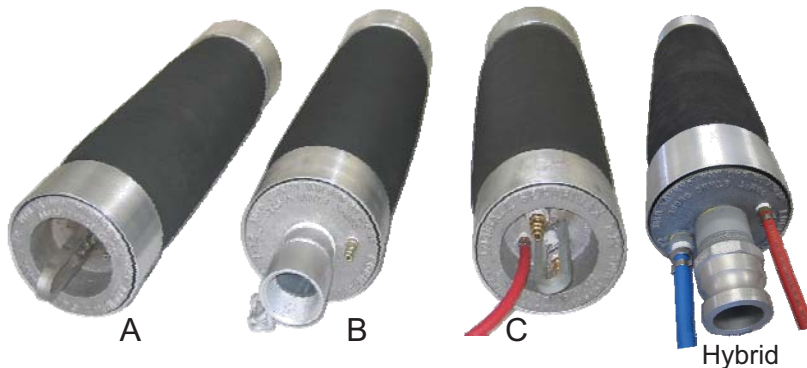


LOGIBALL SECURIMAX PLUGS

The Logiball SECURIMAX plugs are often referred to as the "Work Horse" plugs. High safety factors such as strong anchoring & end plate retaining devices, premium quality rubber sleeves with two ply cross biased reinforcing cords and manufacturing under strict quality controls have made the Securimax Plugs the field proven choice of professionals for 30 years.

Each plug, identified with a serial number, must pass a severe pressure test and is supplied with a test certificate and a leaflet describing its features and information on its safe use.

These sewer plugs can be used for low acceptance testing, plugging and flow control needs in pipe sizes 4" to 36". Factory replaceable rubber sleeves.



Model A: No-flow-thru
 Model B: 1/2" flow-thru on the 4-8
 2" flow-thru on the 5-10 &
 up
 Model C: Two 1/2" flow-thru hoses

A hybrid between models B & C with
 2" bypass & 1/2" bypass for faster low
 acceptance testing is also available on
 size 7-12 & up.



Pipe Size (inches)	Inflation Pressure ¹	Diameter (inches)	Weight (lbs)	Length (inches)	Models Available
4-8	45 psi	3.5	6	18.5	B
5-10	45 psi	4.8	15	26	A, B, C
7-12	35 psi	6.6	26	28.5	A, B, C
9-16	35 psi	8.6	37	30	A, B, C
11-21	35 psi	10.75	50	35.5	A, B, C
13-24	35 psi	12.75	66	39	A, B, C
17-30	25 psi	16.6	160	58	A, B, C
19-36	20 psi	18.75	195	64	A, B, C

¹ At these pressures, the plugs will make a tight seal and safely withstand a back pressure of 5 p.s.i. or 12 feet of water in structurally sound and clean pipes.

Eventhough we build our plugs to last a long time, no rubber plug will last forever!
 Logiball can repair & resleeve all Securimax Plugs.

www.logiball.com

Tel.: 418-656-9767

800-246-5988

LOGIPLUGS

MULTISIZE LARGE FLOW-THRU INFLATABLE PLUGS



The Logiplugs are used in a large variety of applications such as bypass pumping & flow diversion. They can also be used for stopping the flow when the flow thru is plugged off.

The Logiplugs are manufactured on lightweight aluminum mandrels. Steel & stainless steel mandrels are also available. The SBR rubber sleeve is reinforced with two plys of nylon cords. Different elastomers are available for different environments. All plugs must pass a severe pressure test and are shipped with their individual inspection reports and safety information pamphlets.

Custom configurations always possible. Factory replaceable rubber sleeves.

Logiplug Product #	Pipe Size (inches)	Flow-thru Size (FPT)	Inflation Pressure ¹	O.D.	Length	Weight
4-8LP	4 to 8	2" MPT	45 PSI	3.75"	22"	7.5 lbs
6-10LP	6 to 10	2" FPT	35 PSI	5.5"	18.5"	14 lbs
7-12LP	7 to 12	3" FPT	35 PSI	6.5"	18.5"	16 lbs
7-12LPM	7 to 12	4" MPT	35 PSI	6"	22.5"	18 lbs
9-16LP	9 to 16	4" FPT	30 PSI	8"	18.5"	20 lbs
12-18LP	12 to 18	4" FPT or 6" MPT	30 PSI	10"	28"	33 lbs
15-21LP	15 to 21	6" FPT	25 PSI	14"	24"	57 lbs
18-24LP	18 to 24	6" or 8" FPT	25 PSI	16.5"	28"	75 lbs

¹ At these pressures, the plugs will make a tight seal and safely withstand a back pressure of 5 p.s.i. or 12 feet of water in structurally sound and clean pipes.



Optional remote placement pole assembly available in 6 foot long pole segments.



Logiplug 7-12M with 4" MPT by-pass



Color coded safety inflation systems with or without poly lift ropes are available.

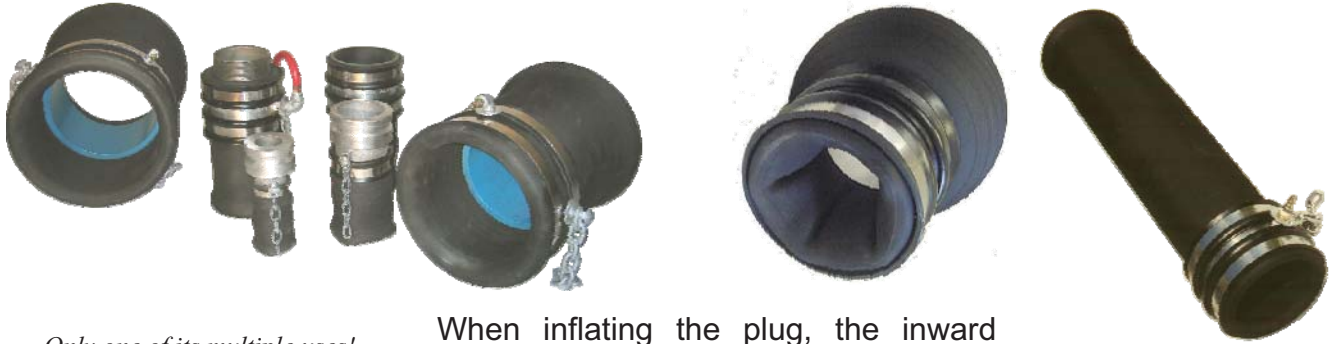
www.logiball.com

Tel.: 418-656-9767

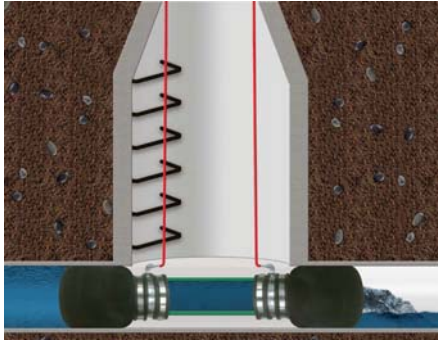
800-246-5988

“D” TYPE LOGIBALL PLUG

Large flow-thru double action bladder.



Only one of its multiple uses!



When inflating the plug, the inward bladder seals against the bypass pipe or the pump suction hose, while the outer bladder seals against the pipe wall. This *SLIP IT ON AND INFLATE* unique feature of the “D” type Logiball will save you time and discomfort.

Custom configurations available for lift station bypass needs.



Factory replaceable rubber sleeves.

Product #	Minimum Pipe Bore	Max. Pipe Bore	Flow-Thru Opening	Connection	Weight
	Inches	Inches	Inches		LBS
3-5D	3.0	5.0	1.25	2.0 inch male quick coupling (Cam type fittings)	4.4
3.5-6D	3.5	6.0	1.5	2.5 inch male quick coupling (Cam type fittings)	4.4
5-8D	4.9	8.0	3.0	4.0 inch male quick coupling (Cam type fittings)	6.0
6-10D	5.8	10.0	4.0	Inward bladder for 4.0 inch A.B.S. Pipe	7.0
8-12D	7.8	12.0	5.0	Inward bladder for 5.0 inch P.V.C. pipe	9.0
11-16D	10.8	16.0	6.0	Inward bladder for 6.0 inch P.V.C. pipe	18.0
13-18D	12.8	18.0	8.0	Inward bladder for 8.0 inch P.V.C. pipe	29.0
15-21D	14.7	21.0	10.0	Inward bladder for 10.0 inch P.V.C. pipe	44.0
20-30D	18.7	30.0	15.0	Integral rubber sleeve with clamp for a pipe between 15.25 to 15.75 inches O.D.	98.0
24-36D	22	36	15.0	Integral rubber sleeve with clamp for a pipe between 17.25 to 17.75 inches O.D.	120.0

www.logiball.com

Tel.: 418-656-9767

800-246-5988

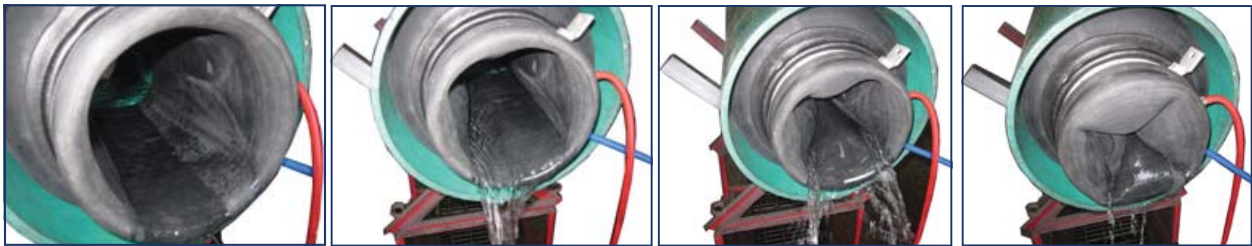
Multisize High Flow/Low Flow Plug

The active flow is controlled from above ground with the Logiball High Flow/Low Flow Plug.

By maintaining the sewer flow active, under control & at a reasonable level, work can be performed downstream without completely blocking the flow or requiring bypass pumping. This flow control sewer plug is a great tool for CCTV inspection, reinstatement or cutting & sectional lining crews.



When inflating the plug, the outward bladder expands and seals against the host pipe. A separate air line with controls is used to expand the internal seal, similar to a pneumatic pinch valve. This reduces the amount of flow going through the center of the plug. The operator decides how much flow is allowed to go through the plug by pressurizing or depressurizing the internal seal from the surface never having to enter the manhole. By releasing the pressure in the internal sleeve, flow is allowed to go through the plug, reducing the back pressure applied on the plug prior to deflation.



TECHNICAL SPECIFICATIONS:

Product #	Pipe Size	Pipe Plug O.D.	Maximum Pipe Bore	Max Flow-thru Opening	Length	Weight
	Inches	Inches	Inches	Inches	Inches	Lbs
6-8HF/LF	6-8	5.25	8	2.75	15.5	9
8-10HF/LF	8-10	7.25	10	4.0	15.5	13
12-15HF/LF	12-15	10.5	15	7.0	15.5	22

The Logiball High Flow/Low Flow Plug cannot be used for air testing.

Factory replaceable rubber sleeve.



Color coded safety inflation systems with or without poly lift ropes are available.

www.logiball.com

Tel.: 418-656-9767

800-246-5988

LOGIBALL LATERAL PUSH PLUGS



The reinforced multisize push type plugs are offered with or without flow-thru for pipe 3" to 6" diameter. They can be inflated and pushed with the optional semi-rigid hose assembly.

LOGIBALL PUSH PLUGS						
Product #	Size (inches)	Model	Plug O.D. (inches)	Bypass Size	Weight (lbs)	Length (inches)
1.75-3A	2-3	A	1.75	N/A	2	12
2.25-4A	2.5-4	A	2 1/4	N/A	2	15
2.25-4B	2.5-4	B	2 1/4	1/4"	2	15
2.5-5A	2.5-5	A	2 3/8	N/A	2.3	15
2.5-5B	2.5-5	B	2 3/8	1/4"	2.3	15
3-6A	3-6	A	2 5/8	N/A	2.5	15
3-6B	3-6	B	2 5/8	1/4"	2.5	15



SHORT LIGHTWEIGHT MULTISIZE PLUGS



With their short lengths, the model E Logiballs can be installed in pipes where longer plugs cannot be fully inserted because bends or fittings are too close to the inlet.

Factory replaceable rubber sleeve.



LIGHTWEIGHT MODEL "E" PLUG						
Product #	Min. Pipe Bore	Max. Pipe Bore	Flow thru	Inflation Pressure	Weight	Length
3-5E	3"	5"	1/2"	40 PSI	1.5 lbs	5.5"
5-8E	5"	8"	1/2"	35 PSI	4 lbs	6.5"
6-10E	6"	10"	2"	35 PSI	7 lbs	7.5"
8-12E	7.8"	12"	2" or 3"	35 PSI	9 lbs	7.5"
11-16E	10.8"	16"	2", 3" or 4"	35 PSI	20 lbs	10"



Custom made configurations available

www.logiball.com

Tel.: 418-656-9767

800-246-5988

LOGIBALL REPROCESSING PLUGS

Aluminum construction
2" NPT bypass
Factory replaceable rubber sleeves
1/2" thick rubber sleeve reinforced with multiple layers of fabric.



MULTISIZE				
Product #	O.D.	Pipe Size	Flow-Thru	Length
6-8LPS	3,75"	6" & 8"	2" MPT	22"
7-10LPS	6.25"	8" & 10"	2" FPT	22"
9-12LPS	8"	10" & 12"	2" FPT	22"
12-15LPS	9.9"	12" & 15"	2" FPT	22"
15-18LPS	14"	15" & 18"	2" FPT	22"
18-21LPS	16.5"	18" & 21"	2" FPT	24"

Larger & custom made configurations always possible.
Factory replaceable rubber sleeves.

SHORT LOGIPLUG "E"



The Logiplug model E is built on a short aluminum core. It will primarily be used in situations where longer plugs cannot be fully inserted.

The model shown here is for 11" to 16" pipe. It has a 2" bypass, but other sizes are available.



www.logiball.com

Tel.: 418-656-9767

800-246-5988

MULTISIZE DUAL SEAL INFLATABLE PLUGS

The Logiball Multisize Dual Seal Inflatable Plugs are used to isolate and test annular spaces of dual containment piping systems. The plugs easily slide between the carrier and containment pipes. Once positioned, air is inserted into the plugs where the inner rubber wall compresses against the outside surface of the carrier pipe and the outer rubber wall expands to seal against the inside wall of the containment pipe.

Two flow-thru ports are provided to insert and monitor the test medium (air) in between the two inflated plugs. The design allows for multiple ranges of annuluses possible in dual containment piping systems.

Other sizes are available on demand.



Set of air hose available.

The fastest & most economical way to perform low pressure air tests on Dual Containment Piping Systems !

Product #	Carrier Pipe O.D.	Min. Containment Pipe I.D.	Max. Containment Pipe I.D.	Min. / Max. Differential
2-4DCTP	2.375"	3.633" or 4" SDR 11	3.938" or 4" SDR 17	0.625" to 0.775"
3-6DCTP	3.5"	5.349" or 6" SDR 11	5.798" or 6" SDR 17	0.925" to 1.149"
4-8DCTP	4.5"	6.963" or 8" SDR 11	7.921" or 8" SDR 26	1.232" to 1.711"
6-10DCTP	6.625"	8.679" or 10" SDR 11	9.874" or 10" SDR 26	1.027" to 1.625"
8-12DCTP	8.625"	10.293" or 12" SDR 11	11.711" or 12" SDR 26	0.834" to 1.543"

www.logiball.com

Tel.: 418-656-9767

800-246-5988

SEGMENTAL AIR TEST KITS

Segmental testing is used to identify and pinpoint leaking joints in collection systems. The inflatable plugs are winched down the line and positioned to straddle the joint to be tested. Once the plugs are inflated, a low pressure air test is performed to verify the integrity of the joint.

These assemblies have also been used to air test service laterals when a Logiball push plug was introduced through a cleanout access.



Kits available for 6"-36"

Product #	Pipe Size	Description
PTTR	4"-6"	Push Type Test Rig (5' span) with 50' of push hose
PTTR-C		Inflation Controls for Push Type Test Rig (plugs & test)
SATK48	6"-8"	Set of two 4-8 B flow-thru plugs on trolleys attached in tandem (5' span)
SATK510	8"-10"	Set of two 5-10 B flow-thru plugs on trolleys attached in tandem (5' span)
SATK712	10"-12"	Set of two 7-12 B flow-thru plugs on trolleys attached in tandem (5' span)
SATK916	12"-16"	Set of two 9-16 B flow-thru plugs on trolleys attached in tandem (5' span)
SATK1121	15"-21"	Set of two 11-21 B flow-thru plugs on trolleys attached in tandem (5' span)



The **Push Type Test Rig** is used to perform low pressure air tests on joints of 4" & 6" laterals from an above ground access. The kit comes with 50 feet of semi-rigid hose used to push and inflate the plugs. The span between the two plugs is 5 feet making it easy to position over the joints to be tested.



Semi-rigid hose assembly to push & inflate the plug from the surface

Lateral connections and lines can also be tested when there is an above ground access for the introduction of an inflatable push plug. The mainline plugs are positioned on each side of the lateral connection and the push plug is inserted into the cleanout access isolating the lateral connection and lateral line.

www.logiball.com

Tel.: 418-656-9767

800-246-5988

LOGIBALL BOREHOLE INJECTION PACKERS



Inflatable



Mechanical

Logiball can design & build a variety of injection packers, whether mechanical or inflatable. Some of these applications include :

- permeability testing,
- chemical injections,
- borehole plugging
- fracture testing,
- cementitious injections,
- well packers.

Custom made products

MECHANICAL TEST PLUGS



Stainless steel and steel parts.
Used for low & medium pressure testing.
Available from 2" through 6" pipe with or without flow-thru.

MEDIUM & HIGH PRESSURE PLUGS



Custom fabricated single size medium & high pressure plugs with flow-thru design. Steel and stainless steel mandrel cores are available. Multiple layers of nylon reinforcement in a thick SBR rubber sleeve cover the mandrel core.

Custom made designs for high pressure injection and well packer plugs are available.

Contact us with your application and requirements.

www.logiball.com

Tel.: 418-656-9767

800-246-5988