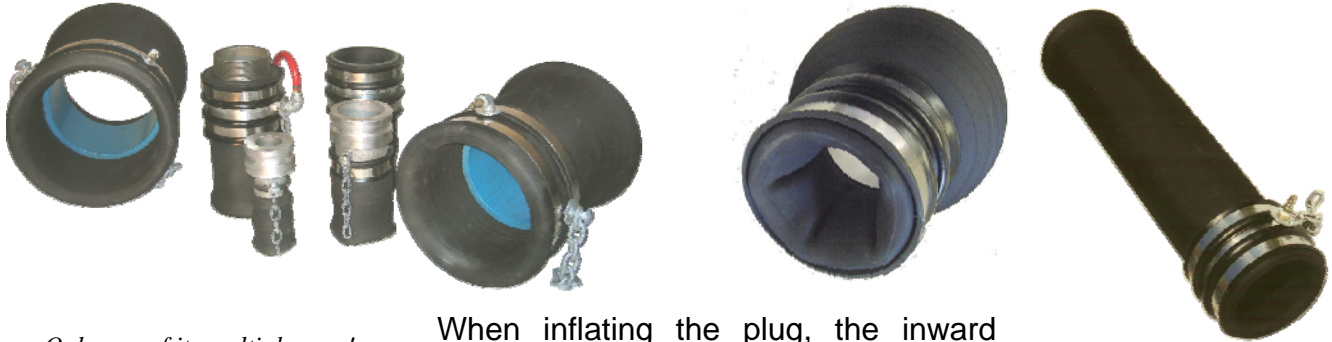
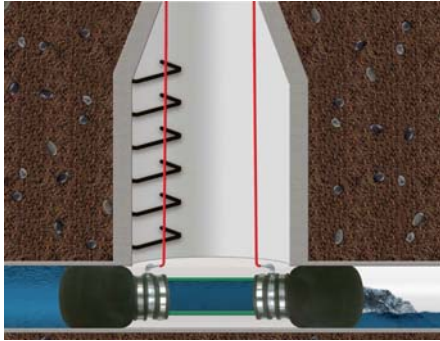


"D" TYPE LOGIBALL PLUG

Large flow-thru double action bladder.



Only one of its multiple uses!



When inflating the plug, the inward bladder seals against the bypass pipe or the pump suction hose, while the outer bladder seals against the pipe wall. This *SLIP IT ON AND INFLATE* unique feature of the "D" type Logiball will save you time and discomfort.

Custom configurations available for lift station bypass needs.



Factory replaceable rubber sleeves.

Product #	Minimum Pipe Bore	Max. Pipe Bore	Flow-Thru Opening	Connection	Weight
	Inches	Inches	Inches		LBS
3-5D	3.0	5.0	1.25	2.0 inch male quick coupling (Cam type fittings)	4.4
3.5-6D	3.5	6.0	1.5	2.5 inch male quick coupling (Cam type fittings)	4.4
5-8D	4.9	8.0	3.0	4.0 inch male quick coupling (Cam type fittings)	6.0
6-10D	5.8	10.0	4.0	Inward bladder for 4.0 inch A.B.S. Pipe	7.0
8-12D	7.8	12.0	5.0	Inward bladder for 5.0 inch P.V.C. pipe	9.0
11-16D	10.8	16.0	6.0	Inward bladder for 6.0 inch P.V.C. pipe	18.0
13-18D	12.8	18.0	8.0	Inward bladder for 8.0 inch P.V.C. pipe	29.0
15-21D	14.7	21.0	10.0	Inward bladder for 10.0 inch P.V.C. pipe	44.0
20-30D	18.7	30.0	15.0	Integral rubber sleeve with clamp for a pipe between 15.25 to 15.75 inches O.D.	98.0
24-36D	22	36	15.0	Integral rubber sleeve with clamp for a pipe between 17.25 to 17.75 inches O.D.	120.0

www.logiball.com

Tel.: 418-656-9767

800-246-5988