

LOGIBALL LATERAL LAUNCHER

CLEAN LATERALS FROM THE MAINLINE SEWER

The Lateral Launcher guides your 1/2" hose and nozzle into the lateral connection from the mainline sewer. Winched in tandem with the cctv camera, the 0-90 vdc motor is used to rotate the guiding arm and nozzle into the lateral connection. With the pump turned on, the back jets propel the hose into the lateral for cleaning.



15" Set-Up

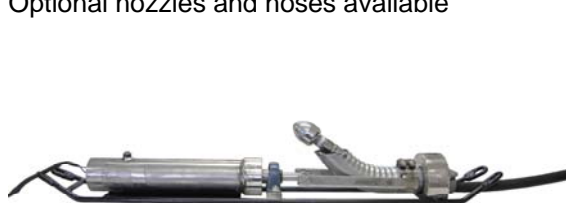
2 models available:

- 8" lateral launcher: - Comes with assembly for use in 8" thru 18" pipes.
- 0-90 vdc motor (operated from the tractor controls of the cctv multiconductor cable)
- 6" lateral launcher: - Single size
- 0-24 vdc motor



Common features:

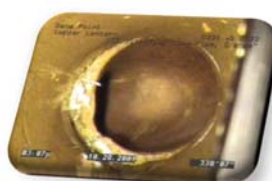
- Stainless steel
- Replaceable guiding arm
- Available with industry standard 3 pin or 4 pin male connector
- Optional nozzles and hoses available



Lateral Launcher for 6" mainline



Control panel for rotation of the launcher



www.logiball.com

Tel: 418-656-9767

800-246-5988