

# LOGIBALL 2001 J MAINLINE TEST & SEAL PACKERS

*Improved sensor system*

**8" Span !**



## Main Features:

**Complies with ASTM 2304-10**

- ◆ Compatible with any 4 or 5 hose TV/Seal Truck
- ◆ Two grout ports, one inflation port & one dedicated test port (No "H" block required)
- ◆ Dedicated liquid filled void pressure sensor line for transducer or pressure gauge at the packer
- ◆ Adjustable independent non-dripping rubber check valves on the packer
- ◆ 8" span makes it easier to line up on the joint (no overpulling)
- ◆ "Autotesting" of joints simply by inflating the packer (increased productivity)
- ◆ Design tested with over 175,000 inflation cycles



The 2001 series are fully compatible for acrylamide, acrylate and urethane gels.

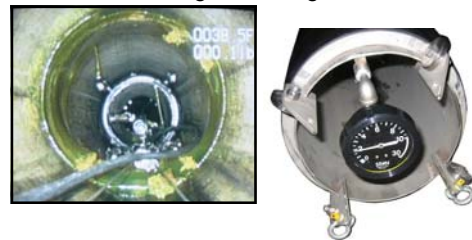
A thick cross-biased reinforced SBR rubber sleeve with soft natural rubber over the seating portion is bonded to the stainless steel core. The smooth outer finish reduces the adherence of the grout on the packer.

The design makes it easier to test & seal leaks with optimal control throughout the operation while reducing operational costs.

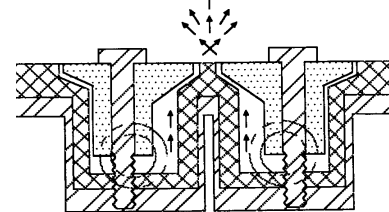
Maintenance and spare parts are kept to a minimum to ensure that time is spent in the field and not in the shop.



Minimal residual grout ring remaining



PART #	SIZE	APPROX. O.D.	LENGTH OVERALL	APPROX VOID UNDER 10 PSI
2001J6S	6"	4.625"	26"	0.3 us gal
2001J8S	8"	6.25"	26"	0.3 us gal
2001J9S	9"	7.25"	26"	0.3 us gal
2001J10S	10"	8.5"	26"	0.3 us gal
2001J12S	12"	10.5"	26"	0.5 us gal
2001J15S	15"	12"	26"	0.75 us gal
2001J18S	18"	15"	26"	1 us gal
2001J2021S	21"	17"	27.5"	1.2 us gal



The large non-clogging rubber check valves are set to open at the proper pressure to avoid dripping. They are opposed and adjacent to dispense the two part grout in a fan-like pattern for good intermixing.

**www.logiball.com**

Tel: 418-656-9767

800-246-5988