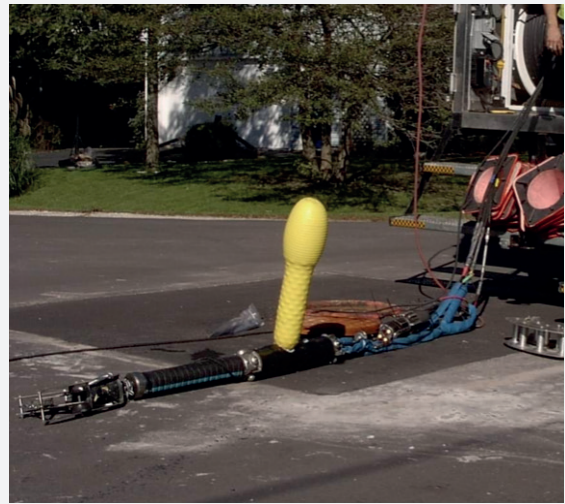




INJECTION PACKERS: LOGIBALL 2001L LATERAL PACKERS

Logiball 2001L packers are used to test and seal off infiltration in sewer laterals, from the mainline, without any access to clean-outs.



PRODUCT DESCRIPTION

The 2001L Lateral Packer comes standard with two grout ports and a third port dedicated for the test medium (air or water). The packers are available with different void pressure monitoring systems; a conventional localized sensor (S - recommended for acrylamide and acrylate grouts), an in wall water chamber sensor (W - recommended for stickier grouts such as urethanes and polyurethanes) or both systems (S & W) for a more versatile use.

KEY FEATURES

- Lateral plug can be inter-changed in a matter of minutes.
- Leaves only a thin layer of grout in the lateral.
- How far up in the lateral can be grouted? 30'.
- No-return grout ports to avoid backup in the grout line.

PRODUCT SPECIFICATION

| Product No. | *Packer O.D. | | Length without Trolleys | | Rec. Max Pipe Diameter | |
|---------------|--------------|-----|-------------------------|------|------------------------|-----|
| | inches +/- | mm | inches +/- | cm | inches | mm |
| 2001L4.25-6 | 4.25 | 106 | 26 | 65 | 6 | 150 |
| 2001L5.5-7.5 | 5.5 | 140 | 27 | 67.5 | 7.5 | 188 |
| 2001L5.5-7.5A | 5.5 | 140 | 27 | 67.5 | 7.5 | 188 |
| 2001L6-8 | 6 | 150 | 27 | 67.5 | 8 | 200 |
| 2001L7.25-10 | 7.25 | 181 | 27 | 67.5 | 10 | 250 |
| 2001L8.5-12 | 8.5 | 213 | 27 | 67.5 | 12 | 300 |
| 2001L12-15 | 12 | 300 | 25 | 62.5 | 15 | 375 |
| 2001L15-18 | 15 | 375 | 25 | 62.5 | 18 | 450 |
| 2001L-17-21 | 17 | 425 | 27 | 67.5 | 21 | 525 |
| 2001L20-24 | 20 | 500 | 27 | 67.5 | 24 | 600 |
| 2001L24-27 | 24 | 575 | 27 | 67.5 | 27 | 675 |
| 2001L26-30 | 26 | 650 | 27 | 67.5 | 30 | 750 |

*As measured on the rubber sleeve