

WATER CONTROL *Quarterly*



July 1998

Most Innovative Product Award Presented to American Logiball by NASTT

by Marc A. Anctil, American Logiball

When accepting the 1998 *Most Innovative Product Award* for the American Logiball Minute Void Lateral Injection Packers, Roger Bissonnette thought that it was also the vitality and effectiveness of the whole grouting industry that the North American Society for Trenchless Technology (NASTT) was recognizing.

Chemical grouting has been known for more than 30 years as the most cost-effective method to stop infiltration of groundwater into the sewer systems. With the innovative and user friendly Logiball Lateral Injection Packers, the service laterals can now be routinely repaired, up to 50 feet from the mainline without any access to the homeowner's property.

The Lateral Injection Packer is winched through the mainline and rotated to align the launching tube and a lateral grouting bladder with the service lateral. Once aligned, air pressure inverts the lateral grouting bladder into the service lateral and inflates the ends of the packer against the mainline walls, creating an isolated void where a two-component chemical grout is pumped. (See illustration on page 2.) The grout is pressured out through defective joints and cracks to form an impervious gel in the surrounding soil. Once the lateral has been sealed and tested, the inversion lateral grouting bladder is retracted by vacuum into the launch-

ing tube. Only a thin layer of grout, which will not affect the flow capacity, is left in the pipe.

American Logiball has been making sewer plugs and grouting packers since 1981. Their first lateral packer, commercialized in 1983, was only effective for grouting the connection of the lateral. In 1994, Madsen/Barr asked Logiball to develop a packer which could also grout the first feet into the laterals. Madsen/Barr, a Florida based company and a leading liner installer, had found that relining the mainlines was not sufficient to cut down the infiltration since the groundwater table would then rise and enter the system through defective laterals.

The combination of both technologies, lining and grouting, was so successful that soon many of the Florida utilities were requesting that the laterals be tested and grouted as part of the relining jobs. Now, over 50 grouting contractors are offering the service throughout the United States, making it a very attractive and cost effective solution.

The Logiball Packer has been improved to pump even the stickiest grouts to distances up to 50

Continued on page 2

In This Issue

- *Grouting Saves Money and Keeps Traffic Flowing* Page 3
- *Trenchless Technology Lecture Series to be Held* Page 5

WATER CONTROL QUARTERLY
Volume 15, Issue 3
 3rd Quarter 1998

AVANTI INTERNATIONAL
 822 Bay Star Blvd.
 Webster, TX 77598-1528
 (281)486-5600 or 1-800-877-2570
 Fax: (281)486-7300
 Email: avanti@iapc.net
 Website: www.avantigrout.com

F. DAVID MAGILL, JR.
 Publisher

CYNTHIA W. KELLEY
 Editor



AVANTI INTERNATIONAL makes every effort to ensure the accuracy and validity of all editorial and advertising content. This publication is independent in its views and does not support, endorse or guarantee any data, statements or opinions which appear under any reference or are attributed to or quoted from any known source. The views expressed by authors do not necessarily reflect the views of AVANTI INTERNATIONAL.

WATER CONTROL QUARTERLY is published quarterly in Webster, TX, USA, by AVANTI INTERNATIONAL.

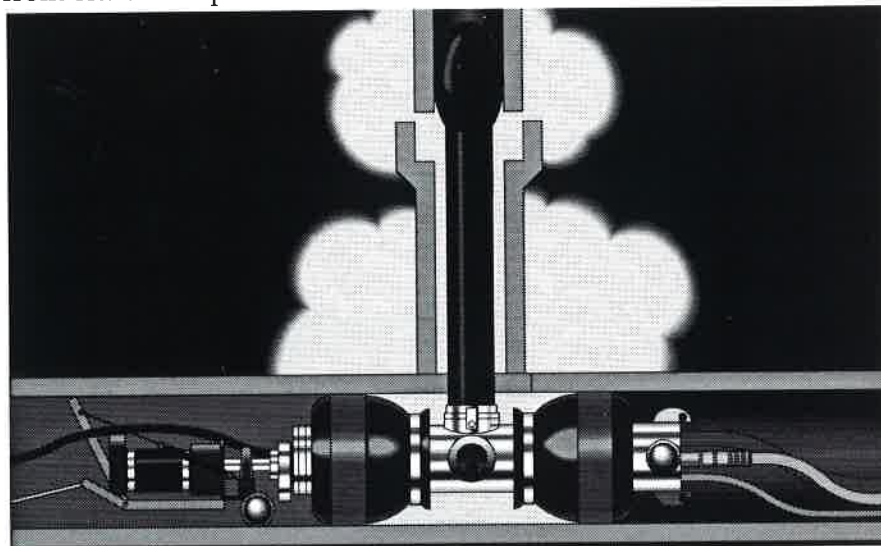
©1998 by AVANTI INTERNATIONAL.
 All rights reserved.

American Logiball/Continued from page 1

feet into the lateral. It is a very sophisticated, yet user-friendly system that can be modified on the job site in a few minutes to suit various sizes of laterals and sealing lengths. It comes with a void pressure sensor diaphragm for pressure transducer, injection point adjustable check valve nozzles, a smooth outside bladder, and frame construction and parts made of stainless steel.

It can be operated with any grouting truck with a few additions to the control panel. Most manufacturers of grouting trucks will, on request, incorporate these extra functions into their panels. American Logiball also offers a separate desktop control panel that incorporates the extra functions for successful lateral grouting.

Avanti International in collaboration with American Logiball has prepared a tentative specification for testing and sealing lateral connections from inside the mainline pipe. It is available upon request from either companies. •



Logiball Lateral Injection Packers allow chemical grout to be injected at service connections, and through cracks and joints in up to 50 feet of the service line.



Roger Bissonnette, president, and Marc A. Anctil, sales manager, at the 1998 NO-DIG Exhibition & Conference.